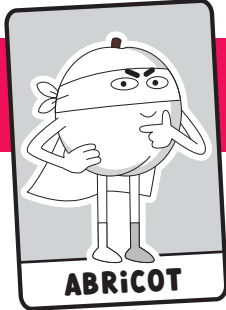


PRINTEMPS



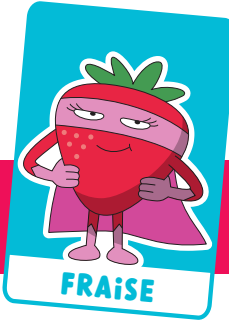
ABRICOT



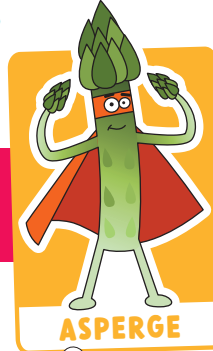
PETIT POIS



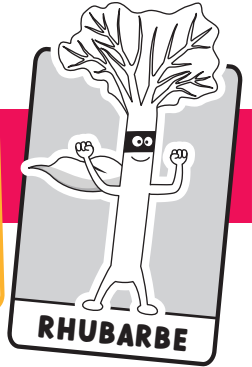
ÉPINARD



FRAÏSE



ASPERGE



RHUBARBE

ÉTÉ



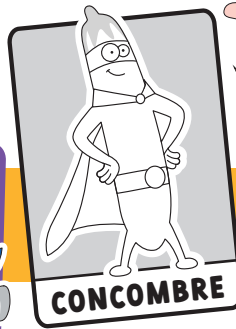
PASTÈQUE



POIVRON



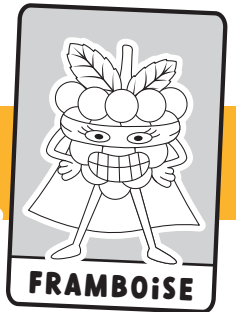
TOMATE



CONCOMBRE



CERISE



FRAMBOISE

AUTOMNE



CHAMPIGNON



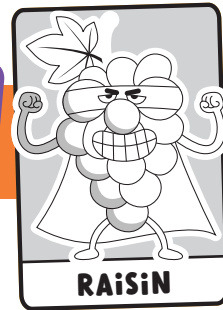
BROCOLI



BLETTE



POIRE



RAÏSi

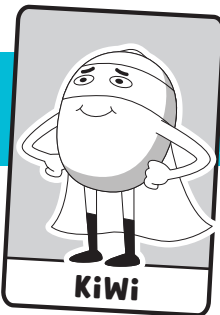


CITROUILLE

HiVER



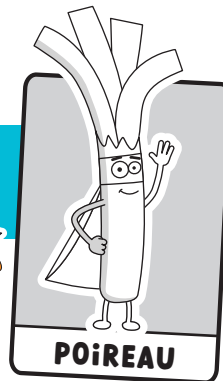
BETTERAVE



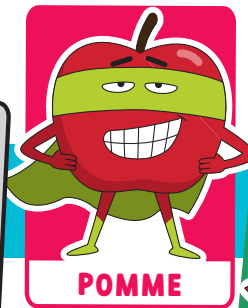
KiWi



CLÉMENTINE



POIREAU



POMME



CAROTTE